

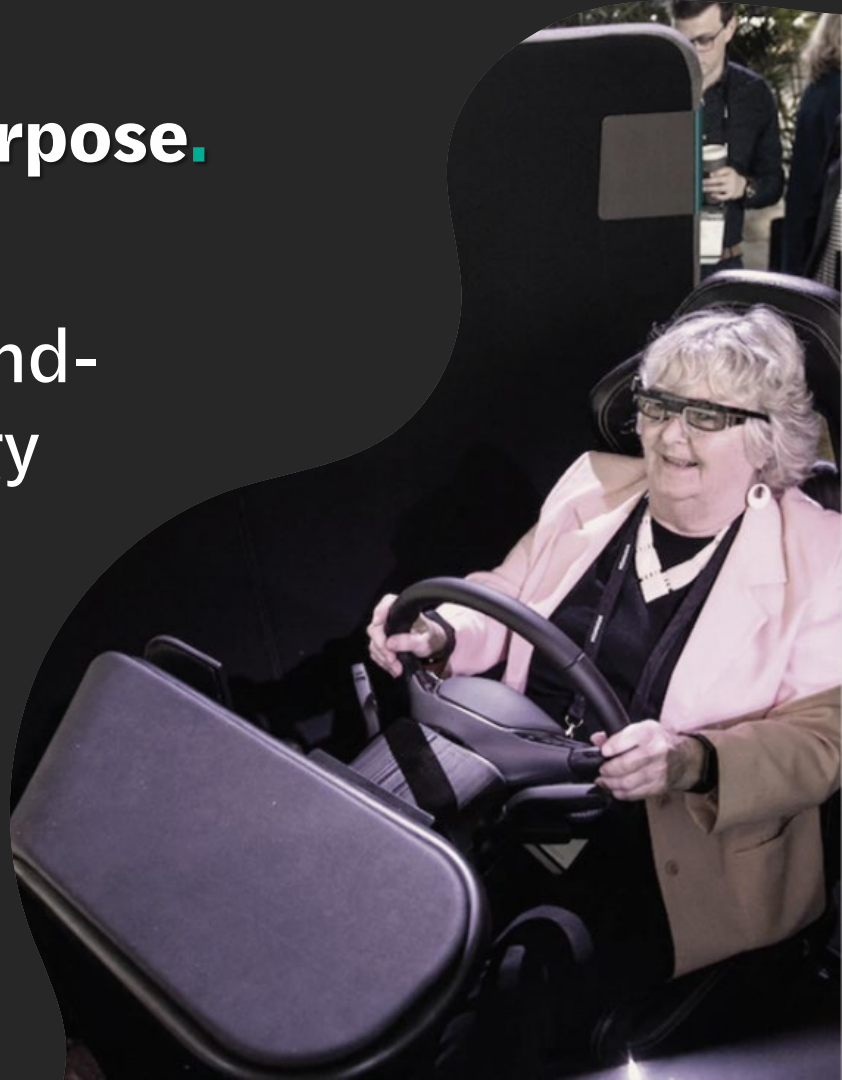


Fit-to-Drive
AI Medical Diagnostic Tool.

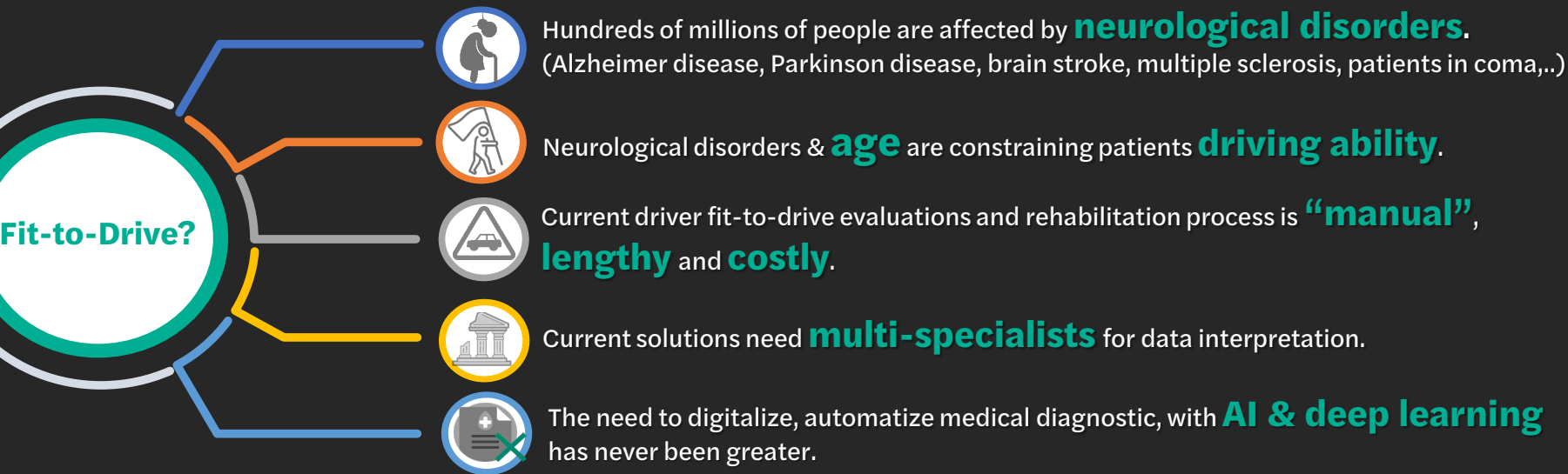


Company purpose.

Becoming the leader of ground-breaking **AI**-based technology for **faster**, more **accurate** & **objective** medical fit-to-drive diagnosis.



Problem.



Solution.



1. **ALL-IN-ONE**
DIAGNOSTIC TOOL
2. **AUTOMATED**
EVALUATIONS
3. **AI-POWERED** **DECISION**
MAKING
4. **CERTIFIED** MEDICAL
DIAGNOSTIC TOOL
5. **FASTER & LOW-PRICE**
REHABILITATION AND
DIAGNOSIS

Current driver evaluation process.



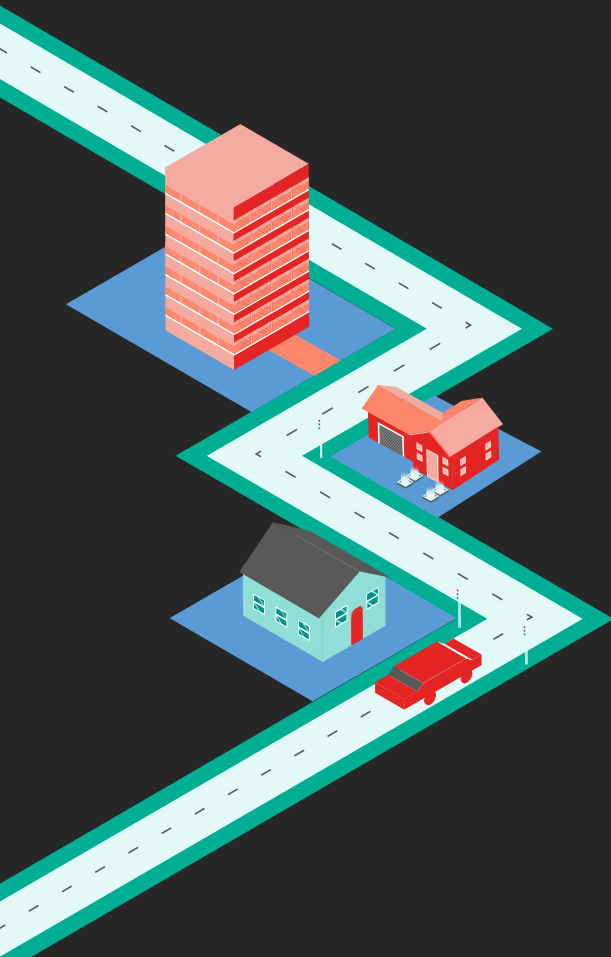
	Neuropsychological tests	Sensory-motoric assessment	On-road assessment	NERVTECH Simulation System
Attention	✓		✓	✓
Perception (visual, auditory, spatial)	✓		✓	✓
Processing speed	✓			✓
Executive functions (decision making)	✓		✓	✓
Limb strength		✓	✓	✓
Limb coordination		✓	✓	✓
Reflexes		✓	✓	✓
Behaviour in limited driving situations			✓	✓
Resolving critical driving situations				✓
Duration	60+ min	30+ min	40+ min	30 min
Complete evaluation		130+ min		30 min
Price	€100+	€60+	€40+	€135*
Complete evaluation Price		€200+		€135*

OLD (CURRENT SOLUTION)

NEW SOLUTION

* Cost per evaluation calculated based on 5-year product life cycle and conservative estimation of evaluated 2.000 patients per year is €64. Suggested retail price per evaluation for the end customer is €135€.

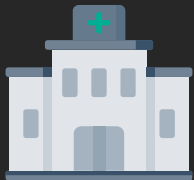
Why now?



1. **Mandatory evaluations** → in EU medical fit-to-drive evaluations are becoming mandatory for people with neurological disorders (e.g. Parkinson, MS, Alzheimer, etc.) and elderly drivers
2. Progressive physicians and medical institutions using benefits of tech and AI to improve diagnostic and rehabilitation services & **increase efficiency**
3. Number of people with **neurological disorders** will **double** by the year 2050
4. Number of people in Europe aged **65 or over** is expected to **grow by 48%** by the year 2050

Unique opportunity to become a **market mover**.

Market potential.



MEDICAL INSTITUTIONS CUSTOMER

More than

10.000

European medical institutions are in need of modern solution for fit-to-drive evaluation and rehabilitation.



PATIENTS END USER

Every year in Europe there are

12 Million

people that are in need of driving capabilities evaluation and rehabilitation process.



Elderly drivers
(above 65 years old)



Seriously Injured drivers
in Road Accidents

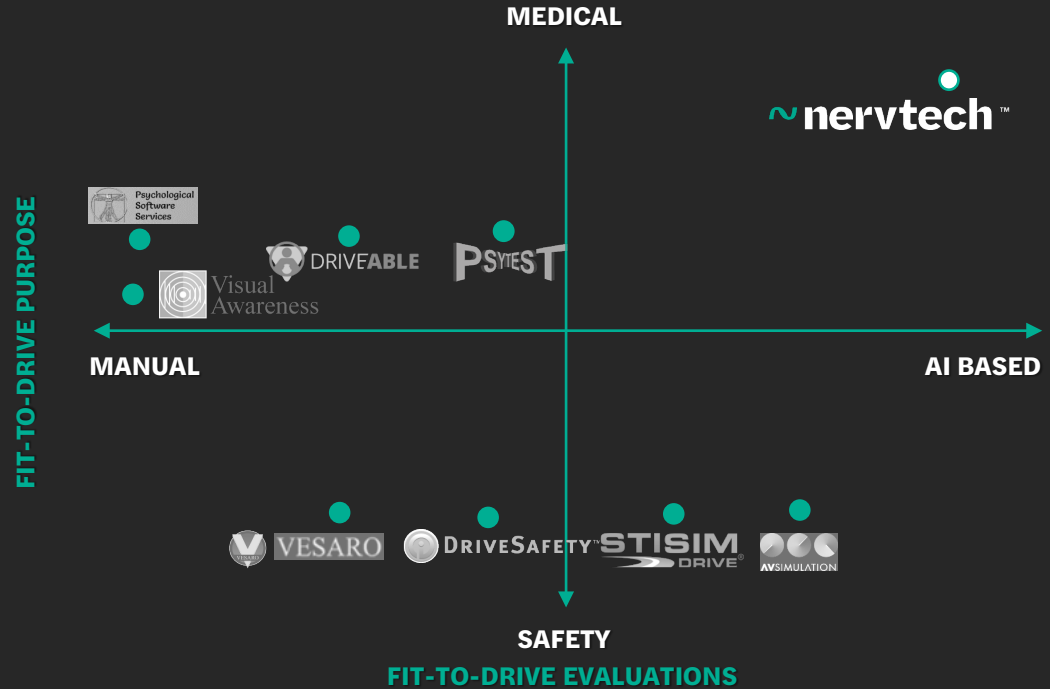


Drivers with
neurological diseases

Competition.

OUR COMPETITIVE ADVANTAGES

- Real-life driving experience with motion driving simulation system
- Biometric data collection
- Automated driving capabilities report
- Certified medical equipment



● Partial testing solutions ● All tests in one solution

Product.



Neuropsychological tests



Sensory-motoric assessment



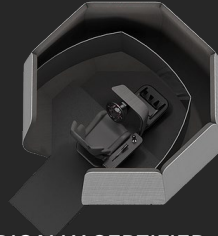
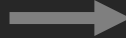
On-road assessment



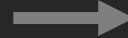
DOCTOR'S REFERRAL FOR
FIT-TO-DRIVE EVALUATION



THE DRIVER



MEDICALLY CERTIFIED
DRIVING SIMULATION SYSTEM
up to 30 minutes



FULLY AUTOMATED &
BIAS-FREE EVALUATION



CERTIFIED MEDICAL REPORT
Driving capabilities & risk evaluation



Biometric sensors



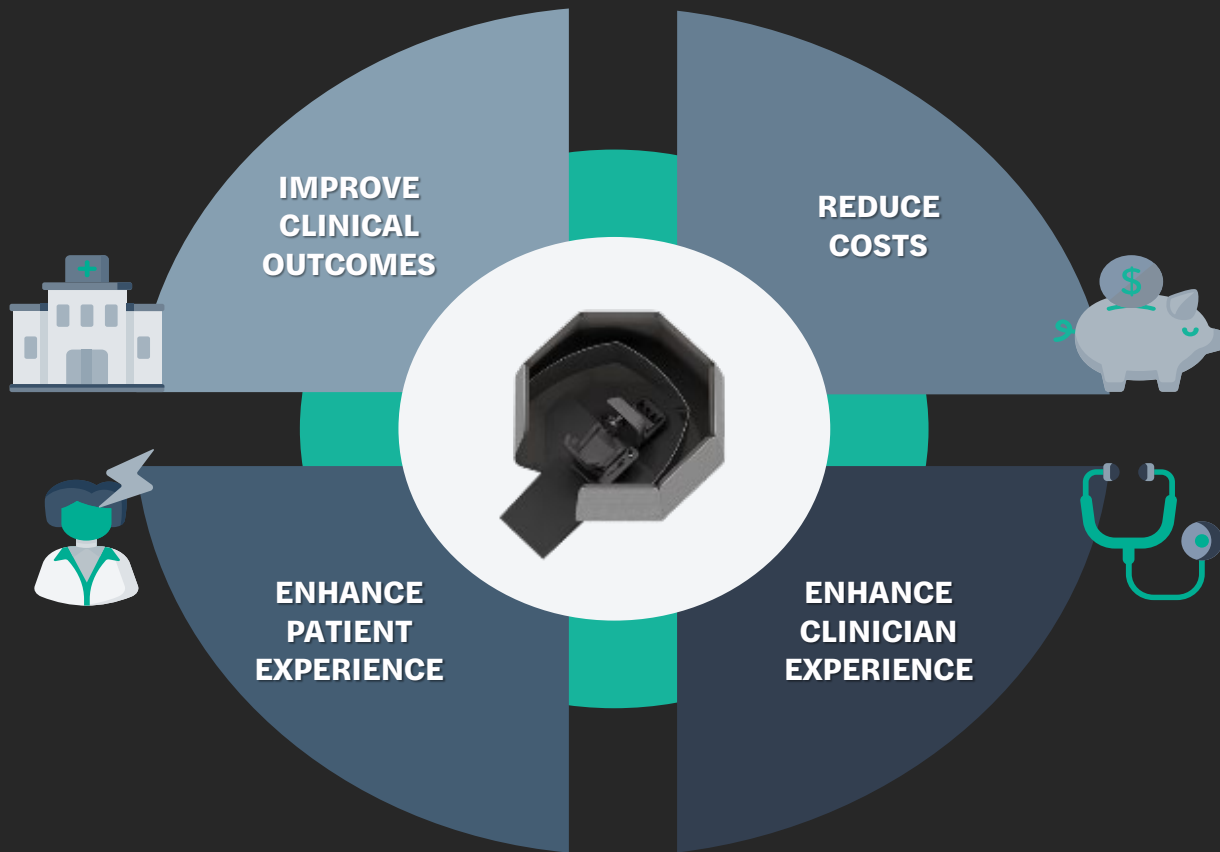
AI-based automated
diagnostics



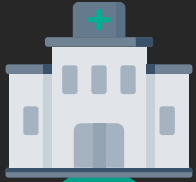
GDPR compliant, no personal data
is handled by Nervtech

We feed the **AI driver cognitive capabilities evaluation algorithm** with **human data** acquired from drivers through all our clients throughout different segments we operate in.

Quadruple aim perspective (USP).



Value proposition.



MEDICAL INSTITUTIONS CUSTOMER

400%

1. Increase evaluation **efficiency** for up to 400%

-50%

2. **Reduce costs** for evaluation and rehabilitation up to -50%

-75%

3. Save physicians **time** up to -75%

↑ digitalization

4. Use of advanced **AI & ML** for in-depth **data** collection

PATIENTS END USER



Faster recovery & improved experience



Evaluation & training in a safe environment



Mobility freedom & independence

Business model.

I. DIRECT SALES

License & Maintenance



€64.000
/year

Charge yearly for cloud-based driving ability analysis and evaluation

Diagnostic tool



€320.000*
/system

Charge per medical diagnostic certified simulation system
* Initial investment

Target customer: **Public medical institutions**

Lifetime Revenue (5 years): **€640.000**

CLTV Customer Lifetime Value (5 years): **€532.000**

II. PAY-PER-EVALUATION

Yearly All-inclusive contract



€200.000
/year

Charge yearly for cloud-based driving ability analysis and evaluation + Diagnostic simulation system

- ✓ Yearly contract
- ✓ 2.000 evaluations package (100€ / evaluation)
- ✓ No initial investment
- ✓ Maintenance license included

Target customer: **Private medical institutions**

Lifetime Revenue (5 years): **€1.000.000**

CLTV Customer Lifetime Value (5 years): **€892.000**

SALES TARGETS (Europe)

Projected Sales of Simulator units *	Y1	Y2	Y3	Y4	Y5
Total per Year [Q]	0	10	42	100	180
Market potential reached (Medical institutes)	0,00%	0,10%	0,52%	1,52%	3,32%
Market potential reached (Patients yearly needs fulfilled)	0,00%	0,17%	0,87%	2,53%	5,53%

* Middle scenario (combination of pessimistic and optimistic)

TURNOVER (Nervtech)

Projected Revenue	Y1	Y2	Y3	Y4	Y5
Total projected Revenue [M€]	1	5	18	44	82
Medical [M€]	0	4	17	42	79
Other revenue streams [M€]	1	1	2	2	3

Team.



MATEJ VENGUST
CHIEF EXECUTIVE OFFICER
Business development, product discovery,
project management



JAKA SODNIK, PHD
CHIEF TECHNOLOGY OFFICER
Expert in computer science and human factor



LARRY KEAVENEY
MEDICAL TOOL EXPERT ADVISOR
Ex-CEO of Philips Healthcare Ireland,
expert on medical tool commercialization



KRISTINA STOJMENOVA, PHD
CHIEF PROJECT OFFICER
Expert in information and
communications technology



JURE LESKOVEC, PHD
DATA SCIENCE ADVISOR
Expert in data science, artificial intelligence
and machine learning



LUKA NOVAK
BUSINESS DEVELOPMENT
Head of business development



VALENTINA LACOVICH, MD
NEUROSCIENCE ADVISOR
Expert in neuroscience and biometric data
analysis

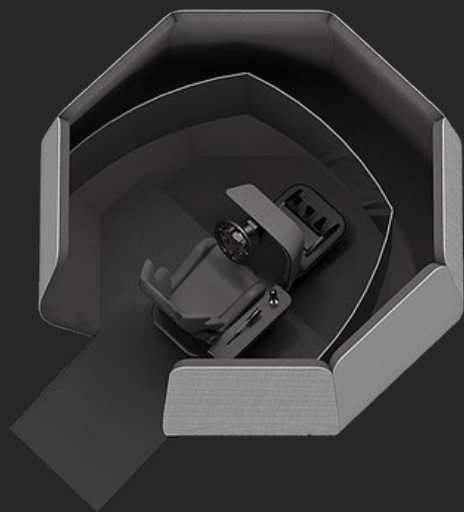


MARKO SREMEC, MD
MEDICAL ADVISOR
Expert of traffic medicine, specialized in
the field of driving abilities evaluation

Our team
members
background:



Financials.



€3M

Seeking an investment amount
Round A

- When? Starting in September 2020.
- Why? Unique opportunity to be the market leader.
- What do we offer? Common shares and board member.
- Round B is possible, at the end of Y3, to further accelerate sales.

Bigger picture.



1. Medical diagnostics / evaluation of drivers

"Fit-to-Drive" evaluation of driving skills.



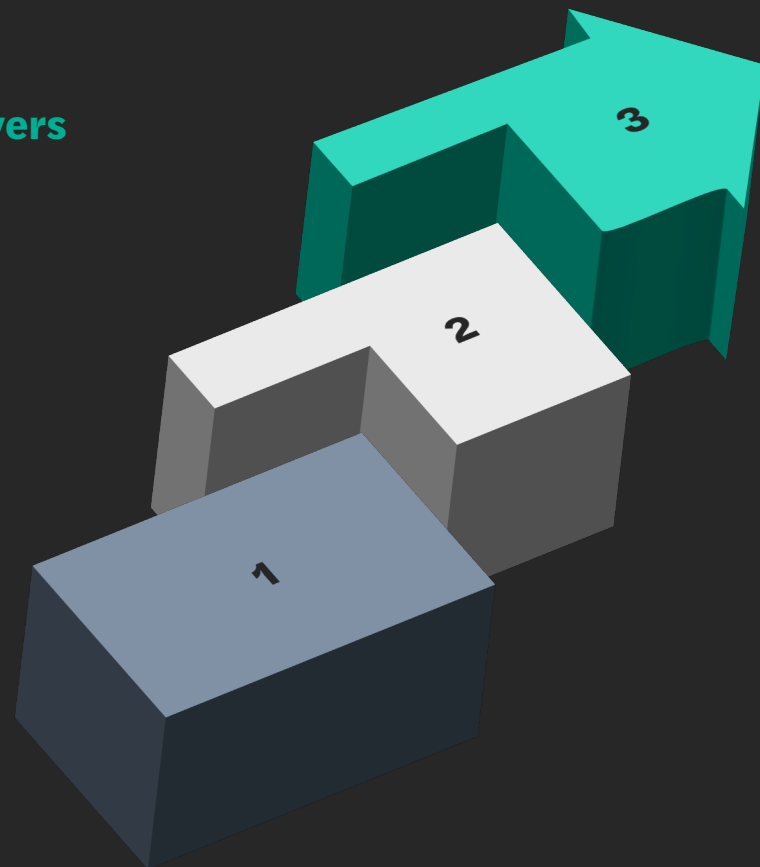
2. Customized rehabilitation process

Rehabilitation to prolong driving ability for those with a medical condition.



3. Big Data utilization

Medical big data crunching and statistical comparison/analysis after a critical mass is reached with the aim of early disease prediction (e.g. for cardio, neuro institutes).



Testimonial.

A young man with short brown hair and a mustache is smiling while wearing a VR headset. He is seated in a black racing-style chair and holding a large black steering wheel. The background shows a dimly lit room with industrial-style lighting and structures. Two red rectangular shapes are positioned on either side of the man's head, partially obscuring the background.

“The simulator allowed me to become much more confident while driving. Today, I no longer think I can’t drive a car.”

21 years old Jakob, born with brain injury. Instructors & doctors said that he will never be able to drive a car.

He trained several times per week for 6 months and then passed his driving license, which offers him priceless freedom of travel and enormously improves his life quality.



the human factor in
artificial intelligence

WEB: NERVTECH.COM

E-MAIL: MVENGUST@NERVTECH.COM

E-MAIL: INFO@NERVTECH.COM

